



ARISTON

# SPARE PARTS EXPLODED VIEW GAS-WALL CONDENSING BOILERS

Model

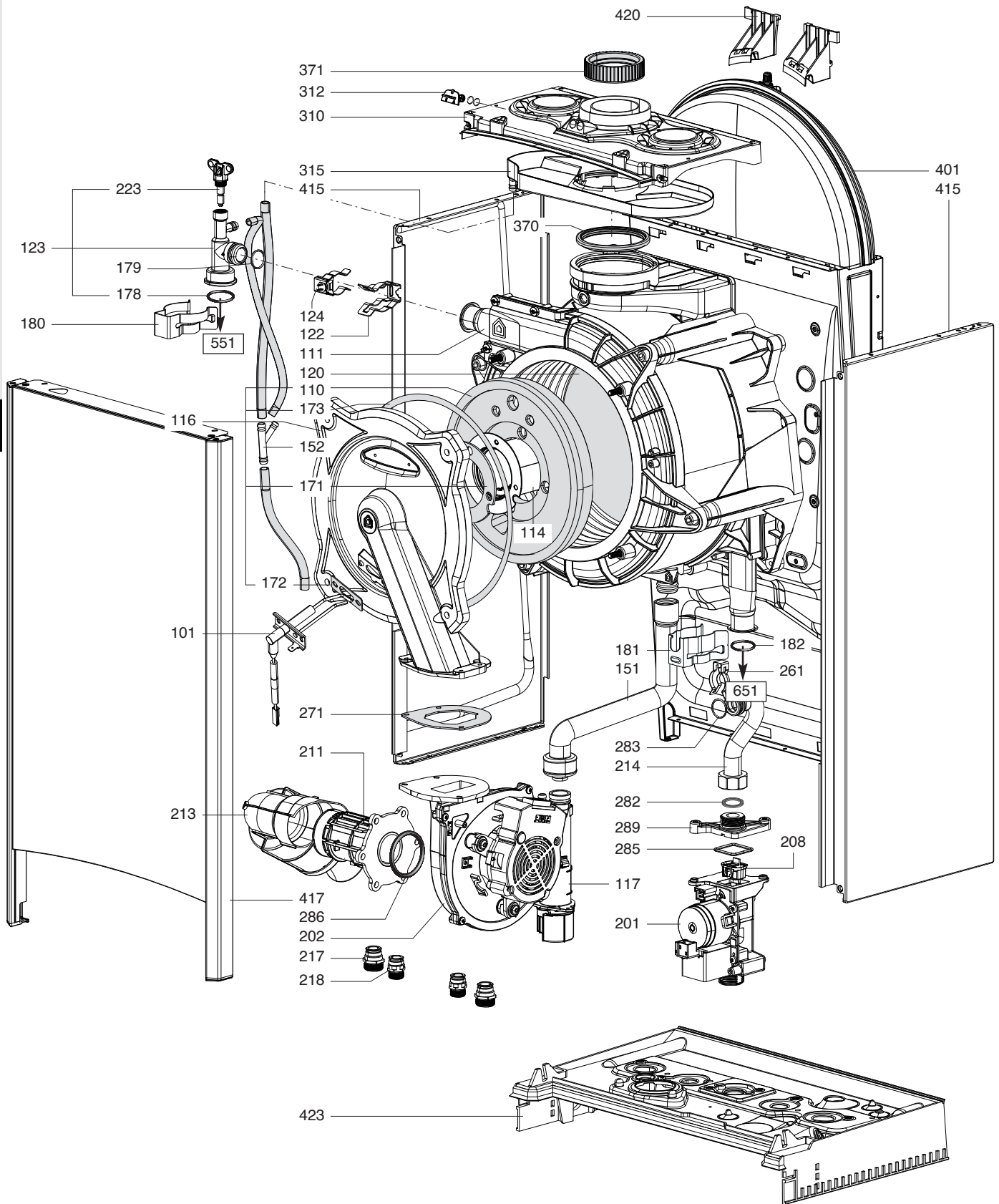
## **GENUS ONE+ (SYSTEM)**

R8219050-03 - 14/05/2025

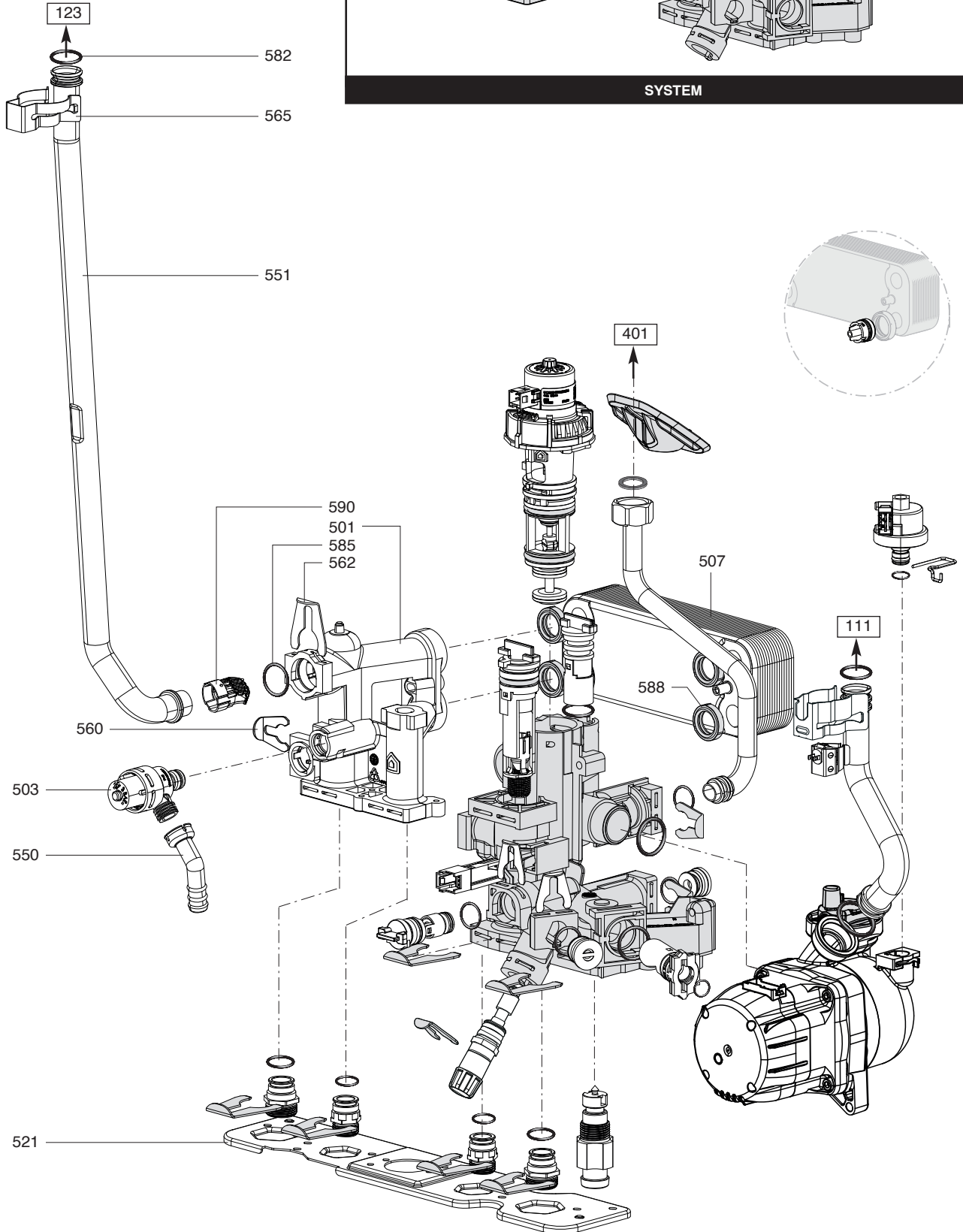
GENUS ONE+(SYSTEM)

Gas-wall condensing boilers

1	3302444	GENUS ONE+ 24	03-2023	-
2	3302445	GENUS ONE+ 30	03-2023	-
3	3302513	GENUS ONE+ 35	03-2023	-
4	3302514	GENUS ONE+ SYSTEM 24	03-2023	-
5	3302515	GENUS ONE+ SYSTEM 30	03-2023	-
6	3302516	GENUS ONE+ SYSTEM 35	03-2023	-
Col	Reference	Model type	Begin	End



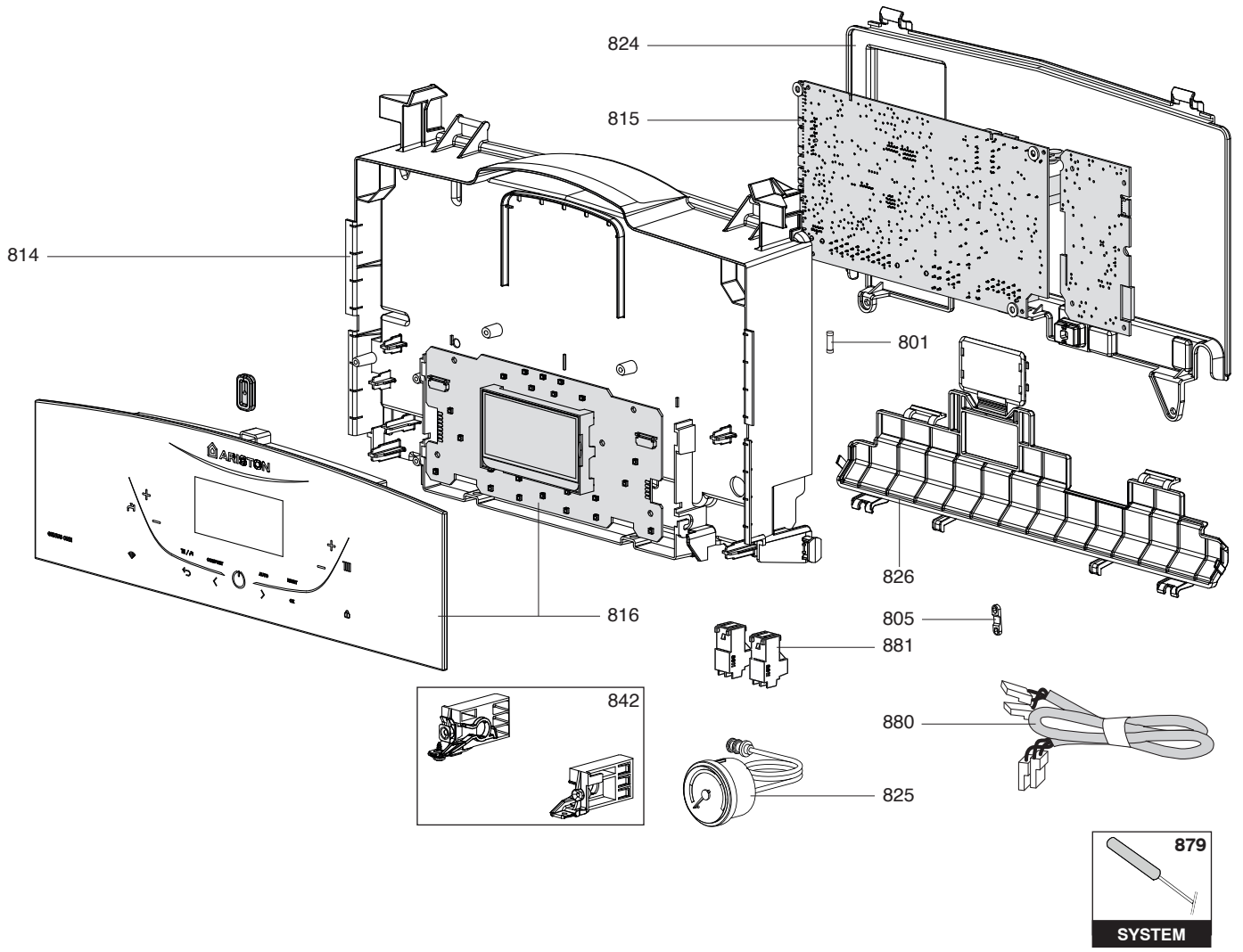














## LIST OF THE ABBREVIATIONS

HW .....	: Hot water.
CW .....	: Cold water.
C .....	: Ceramic resistance (normal heating).
Ca .....	: Ceramic resistance (accelerated heating)
TP .....	: Immersion heater.
1F .....	: With fittings.
2F .....	: Without fittings.
3F .....	: With fittings and another outlet connection.
AMI .....	: With mixing valve.
SMI .....	: Without mixing valve.
PUISS .....	: Power of th appliance.
PN .....	: Appliance with normal pression.
LP .....	: Appliance with low pression.
PV .....	: Appliance with variable power.
PF .....	: Appliance with fixed power.

## IDENTIFICATION PLATE

### SERIAL NUMBER

<b>10 Characters :</b>	04 05 125 011	Sequential number
		Manufacturing day
		Year of manufacture
<b>11 Characters :</b>	1 95 065004 - 31	Technical number of the appliance
Month of manufacture :		Sequential number
from 1 to 9 → Jan. to Sep.,		Year of manufacture
O → Oct., N → Nov.,		
D → Dec.		
<b>19 Characters :</b>	08 05 0013199 900640031	Product reference
Year of manufacture		Sequential number
Month of manufacture		
<b>20 Characters :</b>	3675007 XX 2 07 070 00315	Sequential number
Product reference		Manufacturing day
Millenium of manufacture		Year of manufacture
<b>21 Characters :</b>	3675007 XX 07 070 0000315	Sequential number
Product reference		Manufacturing day
Year of manufacture		