

ala / eccentrico / edge / homey /
lancetta / monsieur / wave

falper.

ala p. 3

eccentrico p. 15

edge p. 31

homey p. 45

lancetta p. 63

monsieur p. 71

wave p. 81

ALA
DESIGN VICTOR VASILEV









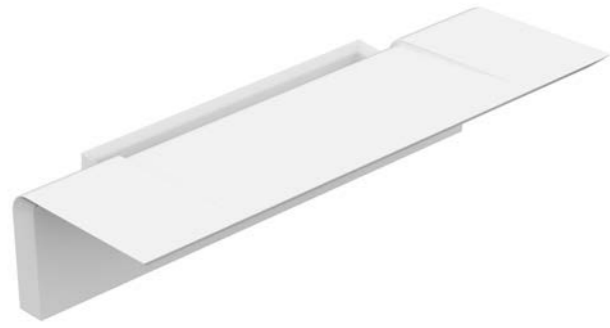
una silhouette inconfondibile. l'idea di ala nasce dalla precisa ricerca di un lavabo nuovo, diverso da ogni altro. una superficie pulita, che cela tutto quello che c'è di meramente funzionale, creando un prodotto innovativo e al contempo sorprendentemente familiare. universale, in quanto accessibile ed ergonomico - e senza per questo imporre l'attenzione sulla sua completa accessibilità.

an unmistakable silhouette. the idea of ala stems from the precise search for a new sink, different from any other. a clean surface, which conceals everything that is merely functional, creating an innovative yet surprisingly familiar product. universal, as accessible and ergonomic - and without claiming attention to its complete accessibility.

uno schienale in acciaio inox, disponibile in sei diverse finiture, può essere aggiunto in caso di rivestimenti non resistenti all'acqua.

a steel backrest, available in six different finishes, can be added in case of non-water-resistant wall coverings.





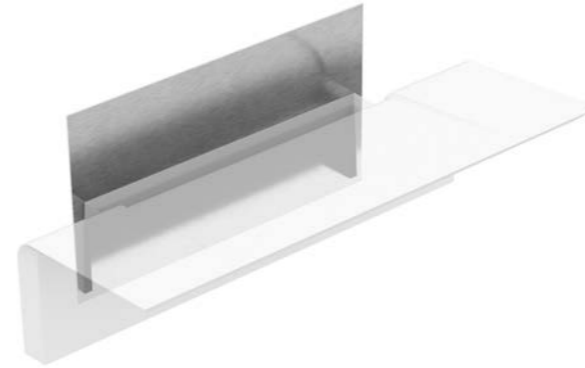
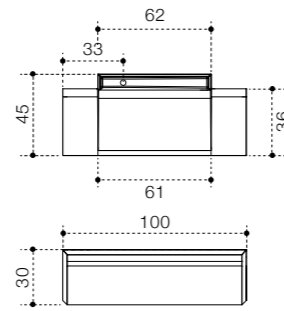
articolo / item
WMA

lavabo da parete in
cristalplant biobased /
wall mounted washbasin in
biobased cristalplant

larghezza / width
100 cm

altezza / height
30 cm

profondità / height
45 cm



articolo / item
WHE

optional schienale in acciaio/
optional steel splashback

larghezza / width
66 cm

altezza / height
38 cm

finiture lavabo / basin finishes

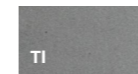
cristalplant
biobased



bianco opaco/
matt white

finiture schienale / splashback finishes

metalli
metals



inox titanium /
stainless steel
titanium



rame spazzolato /
brushed copper



ottone
spazzolato /
brushed brass



onice /
onyx



inox satinato /
brushed
stainless steel

brevettato / patented

brevettato / patented

ECCENTRICO

DESIGN VICTOR VASILEV







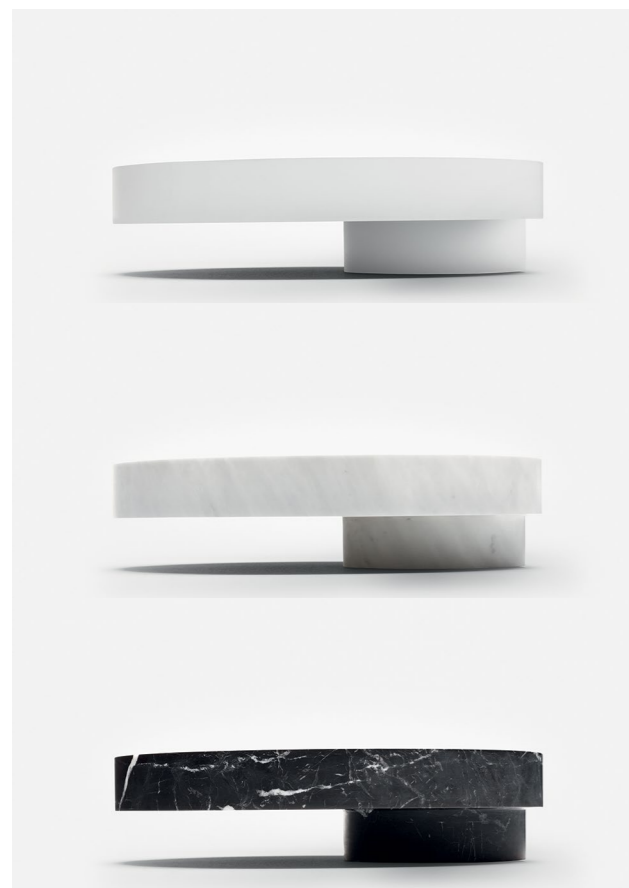
una progettazione razionale, che esalta la geometricità del cerchio declinandola in un elemento totemico e realizza un dialogo semplice e raffinato fra le diverse matericità di marmo di carrara, legno, metallo e cristalplant®. texture e suggestioni tattili diventano rappresentazione di sofisticata originalità, per un lavabo freestanding di grande carattere.

a rational design, which enhances the geometry of the circle by declining it into a totemic element and creates a simple and refined dialogue between the different materials of carrara marble, wood, metal and cristalplant®. textures and tactile suggestions become a representation of sophisticated originality, for a freestanding washbasin with great attitude.









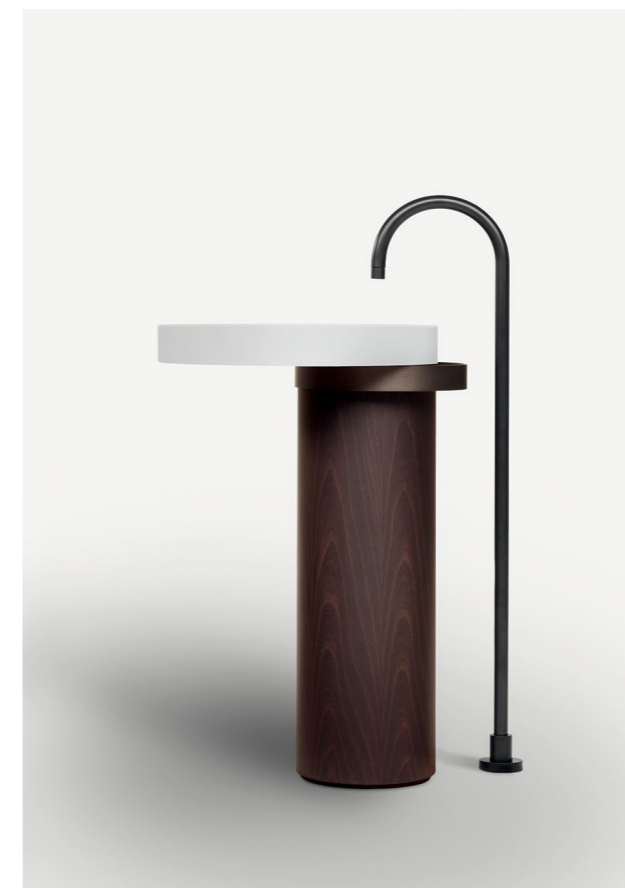
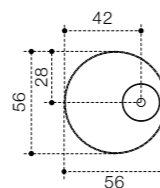
articolo / item
WN1 - WN3

lavabo soprapiano
da appoggio /
overlying basin

larghezza / width
56 cm

altezza / height
14 cm

profondità / depth
56 cm



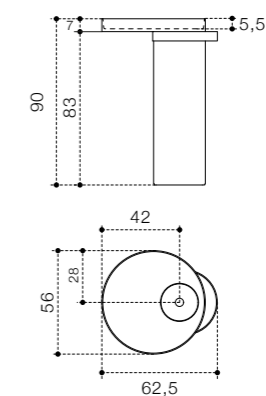
articolo / item
WN5

lavabo freestanding in
cristalplant biobased
e legno /
freestanding washbasin
in cristalplant biobased
and wood

larghezza / width
56 cm

altezza / height
90 cm

profondità / height
63 cm



finiture lavabo / basin finishes

marmi 1
marbles 1



carrara



pietra grey



nero marquina

marmi 2
marbles 2



statuario



calacatta gold

finiture lavabo / basin finishes

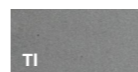
cristalplant
biobased



bianco opaco/
matt white

finiture porta salviette / towel bar finishes

metalli
metals



inox titanium /
stainless steel
titanium



rame spazzolato /
brushed copper



ottone
spazzolato /
brushed brass



onice /
onyx



inox satinato /
brushed
stainless steel

finiture basamento / base finishes

cat. 2
legni
woods



acacia th /
acacia th



realizzabile in tutte le finiture legno della cat. 2.
feasible in all the cat. 2 wood finishes.

brevettato / patented

brevettato / patented



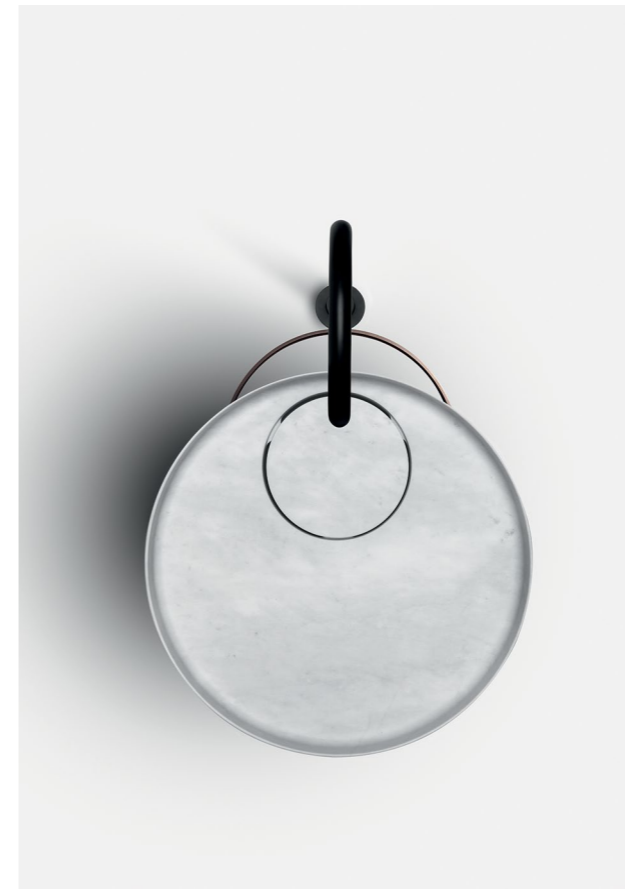
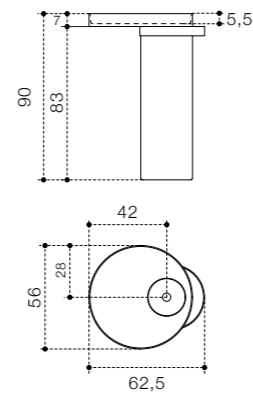
articolo / item
WN7

lavabo freestanding in
marmo e legno /
marble and wood
freestanding washbasin

larghezza / width
56 cm

altezza / height
90 cm

profondità / height
63 cm



dettaglio vista dall'alto del lavabo freestanding /
freestanding basin overview

marmi 1
marbles 1



carrara



pietra grey



nero marquina

marmi 2
marbles 2



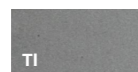
statuario



calacatta gold

finiture lavabo / basin finishes

metalli
metals



inox titanium /
stainless steel
titanium



rame spazzolato /
brushed copper



ottone
spazzolato /
brushed brass



onice /
onyx



inox satinato /
brushed
stainless steel

finiture porta salviette / towel bar finishes

cat. 2
legni
woods

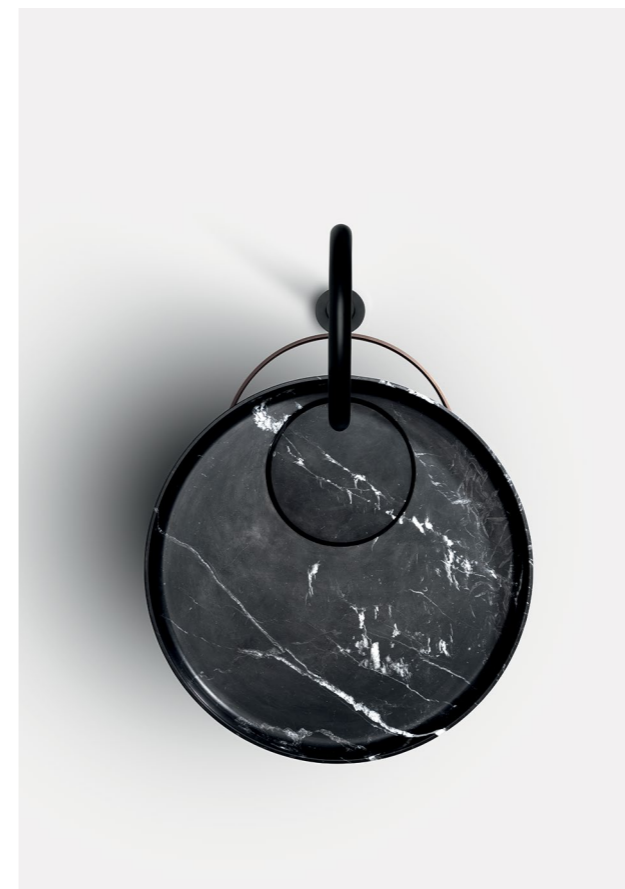


acacia th /
acacia th



realizzabile in tutte le finiture legno della cat. 2.
feasible in all the cat. 2 wood finishes.

brevettato / patented



brevettato / patented

EDGE
DESIGN METRICA







edge wood è realizzato con ante in acacia termo trattata, piani di marmo e maniglia a gola in acciaio inox, disponibili in sei finiture.

edge wood is made with thermo-treated acacia doors, marble tops and stainless steel groove handle, available in six different finishes.







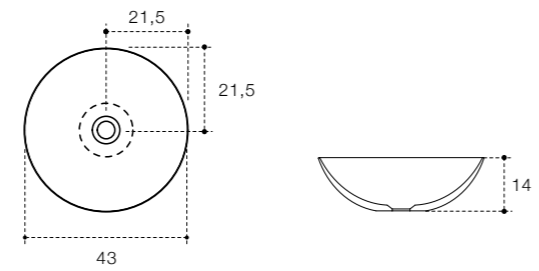
articolo / item
D8B

lavabo tondo in ceramilux /
ceramilux round basin

larghezza / width
43 cm

altezza / height
14 cm

profondità / height
43 cm



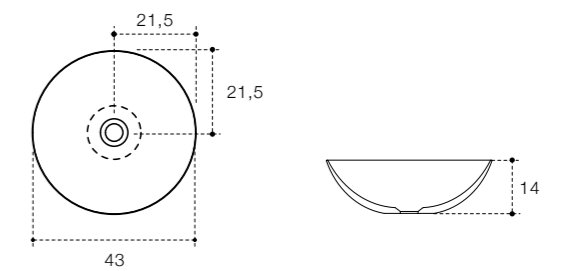
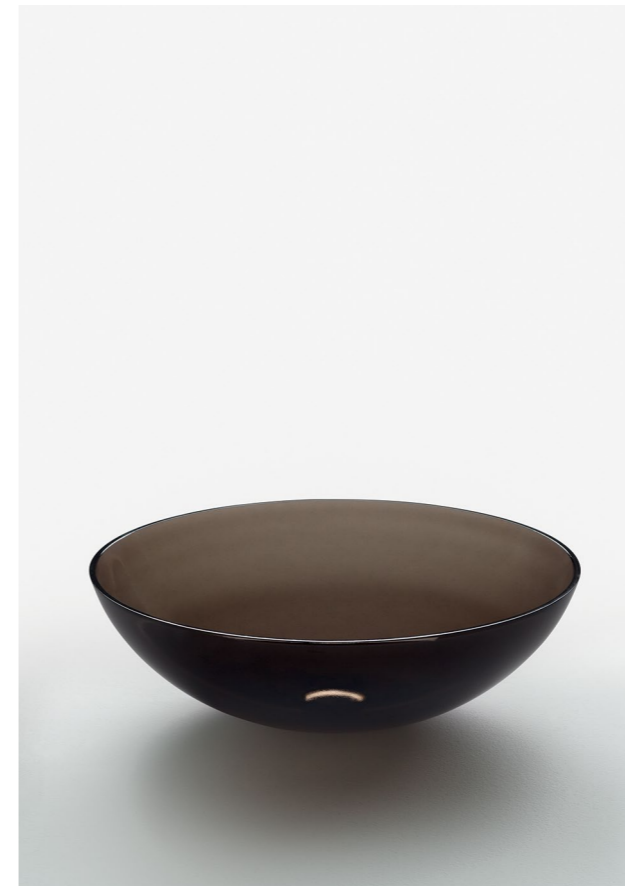
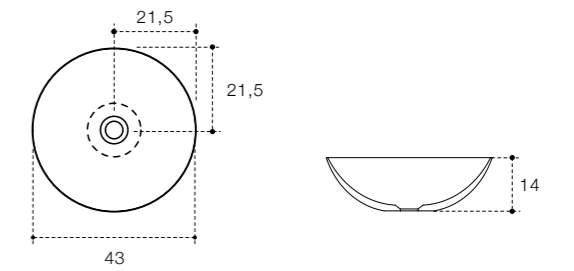
articolo / item
WV1

lavabo tondo in vetro /
glass round basin




larghezza / width
43 cm

altezza / height
14 cm

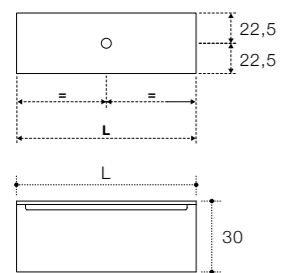
profondità / height
43 cm



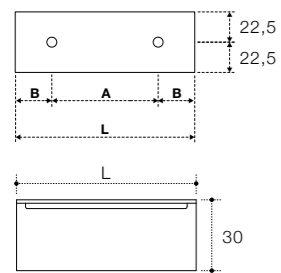
finiture lavabo / basin finishes

ceramilux ssl		vetro glass		
	bianco opaco/ matt white		vetro trasparente transparent glass	vetro fumè grigio grey fumè glass

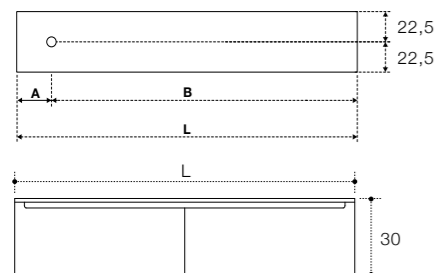
brevettato / patented



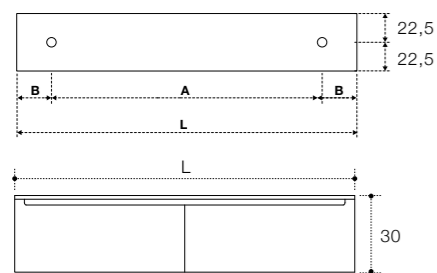
articolo / item	L	P	H
ECA 80CX	80 cm	45 cm	30 cm
ECA 100CX	100 cm	45 cm	30 cm
ECB 120DX. ECC 120SX. ECA 120CX	120 cm	45 cm	30 cm
ECB 140DX. ECC 140SX. ECA 140CX	140 cm	45 cm	30 cm
ECB 160DX. ECC 160SX. ECA 160CX	160 cm	45 cm	30 cm



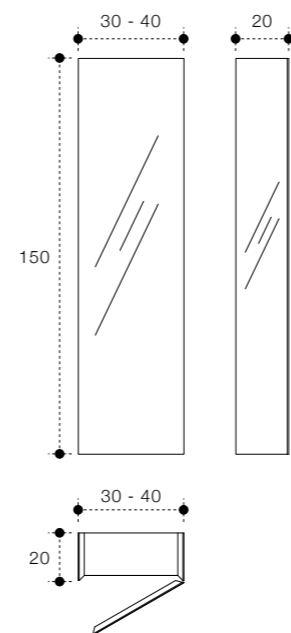
articolo / item	L	P	H
ECD 120	120 cm	45 cm	30 cm
ECD 140	140 cm	45 cm	30 cm
ECD 160	160 cm	45 cm	30 cm



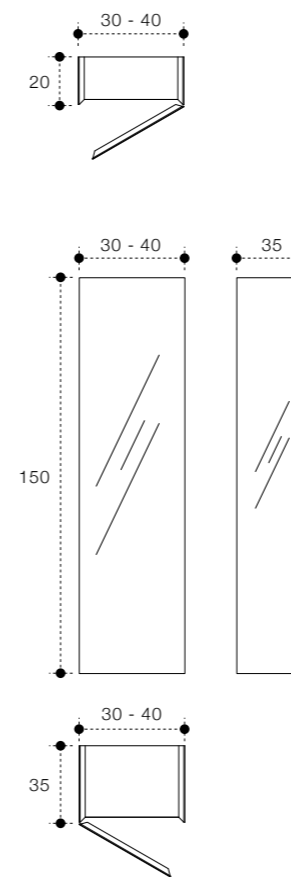
articolo / item	L	P	H
ECE 140DX. ECF 140 SX	140 cm	45 cm	30 cm
ECE 160DX. ECF 160SX	160 cm	45 cm	30 cm
ECE 180DX. ECF 180SX	180 cm	45 cm	30 cm



articolo / item	L	P	H
ECG 140	140 cm	45 cm	30 cm
ECG 160	160 cm	45 cm	30 cm
ECG 180	180 cm	45 cm	30 cm

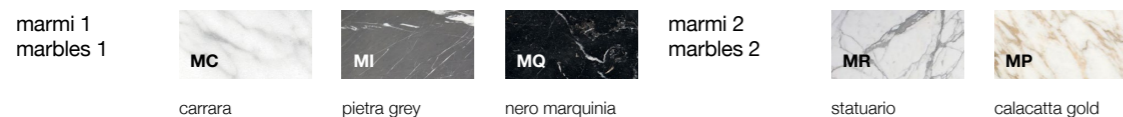


articolo / item	L	P	H
EAP 30DX. EAQ 30SX	30 cm	20 cm	150 cm
EAP 40DX. EAQ 40SX	40 cm	20 cm	150 cm



articolo / item	L	P	H
EAL 30DX. EAM 30SX	30 cm	35 cm	150 cm
EAL 40DX. EAM 40SX	40 cm	35 cm	150 cm

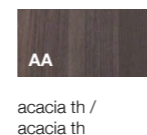
finiture top / top finishes



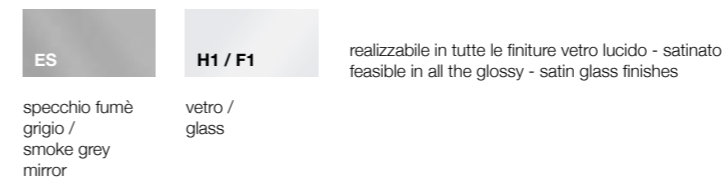
finiture fascia frontale / band finishes



parti di legno / wood parts



finiture mobile / furniture finishes



realizzabile in tutte le finiture vetro lucido - satinato
feasible in all the glossy - satin glass finishes

brevettato / patented

brevettato / patented

HOMEY

DESIGN SIMONE BONANNI E ATTILA VERESS







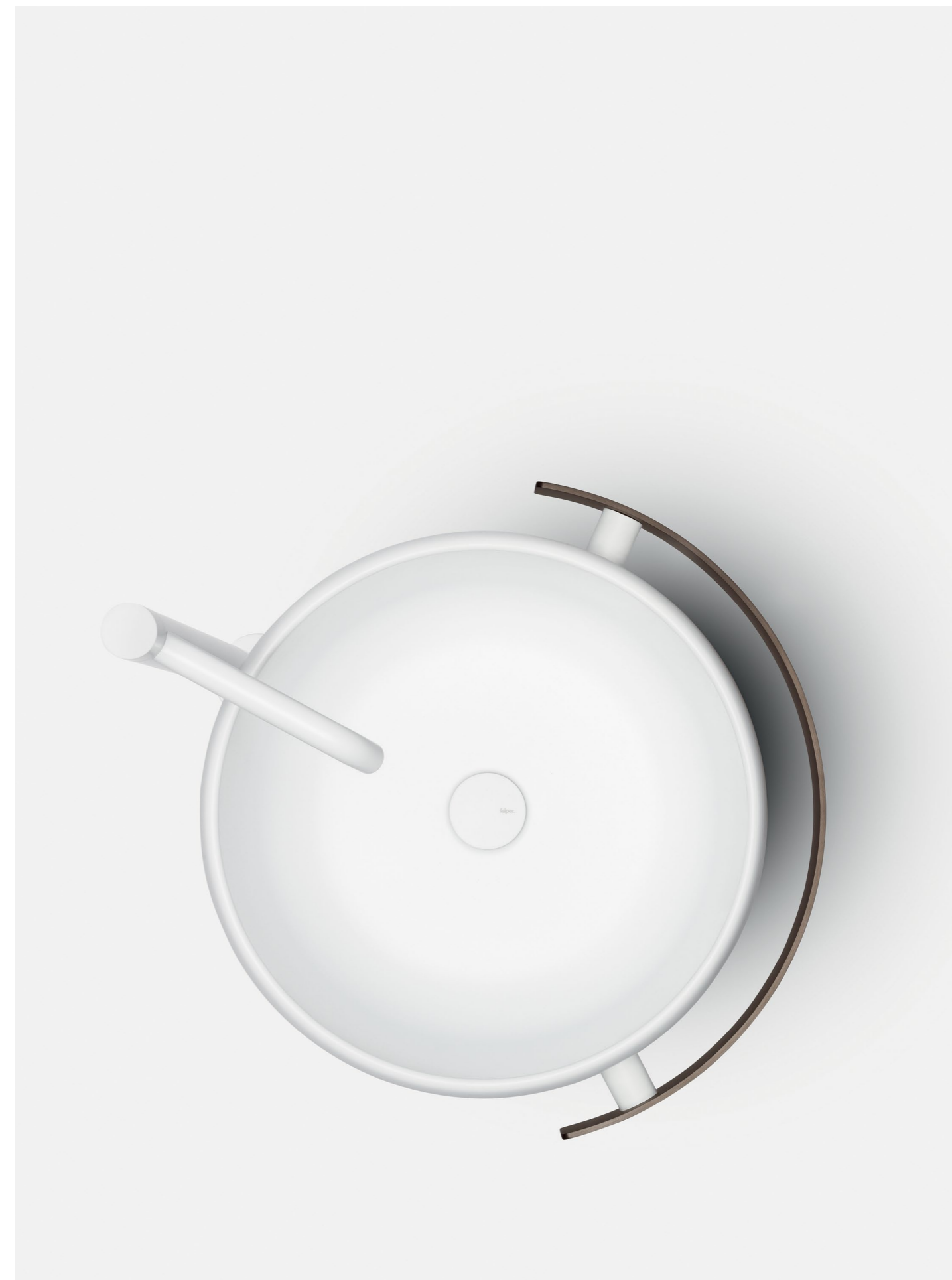




la complicità tra luci e ombre genera nello spazio volumi gentili e silenziosi.

la collezione homey si compone di 3 elementi (vasca, lavabo da appoggio e lavabo da terra), ognuno dei quali disponibile con inserti opzionali in finitura metallica. l'elemento in metallo diventa la cornice che caratterizza e impreziosisce il cristalplant bianca, dando vita ad un prodotto dal tono scultoreo, semplice e senza tempo.

the complicity between lights and shadows generates gentle and silent volumes in space. the homey collection consists of 3 elements (bathtub, countertop washbasin and floor standing washbasin), each one available with optional inserts in metallic finish. metal becomes the frame that characterizes and embellishes the white cristalplant, giving life to a product with a sculptural, simple and timeless tone.





articolo / item
WD7

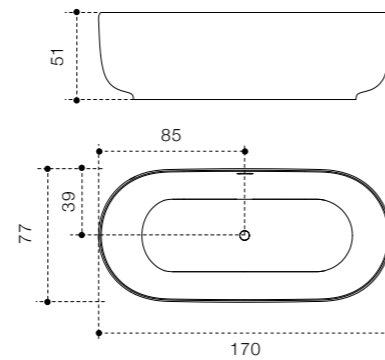
vasca freestanding /
freestanding bathtub

bianco opaco /
matte white

larghezza / width
170 cm

altezza / height
51 cm

profondità / height
77 cm



finiture lavabo / basin finishes

cristalplant
biobased

bianco opaco/
matt white

brevettato / patented



articolo / item
WD8

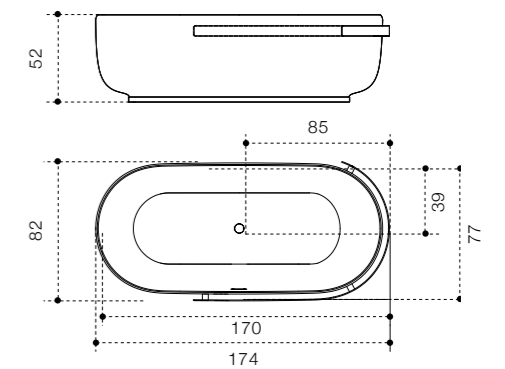
vasca freestanding /
freestanding bathtub

bianco opaco /
matte white

larghezza / width
174 cm


altezza / height
52 cm

profondità / height
82 cm



finiture porta salviette e zoccolo / towel and baseboard finishes

metalli
metals

 TI	 RM	 OR	 ON	 SA
inox titanium / stainless steel titanium	rame spazzolato / brushed copper	ottone spazzolato / brushed brass	onice / onyx	inox satinato / brushed stainless steel

brevettato / patented



articolo / item
WD1

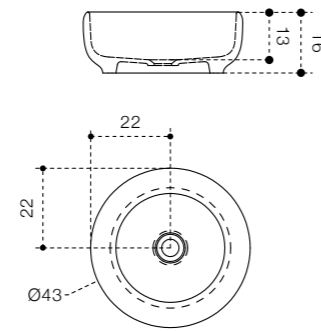
lavabo in cristalplant
biobased /
washbasin in
cristalplant biobased

bianco opaco /
matte white

larghezza / width
43 cm

altezza / height
16 cm

profondità / height
43 cm



articolo / item
WD3

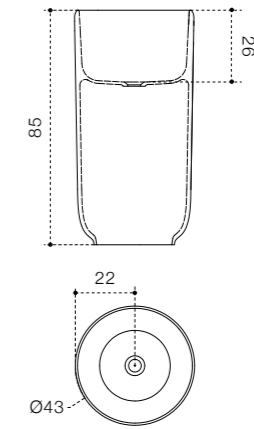
lavabo freestanding in
cristalplant biobased /
freestanding washbasin in
cristalplant biobased

bianco opaco /
matte white

larghezza / width
43 cm

altezza / height
85 cm

profondità / height
43 cm



finiture lavabo / basin finishes

cristalplant
biobased



bianco opaco/
matt white

finiture lavabo / basin finishes

cristalplant
biobased



bianco opaco/
matt white

brevettato / patented

brevettato / patented



articolo / item
WD4

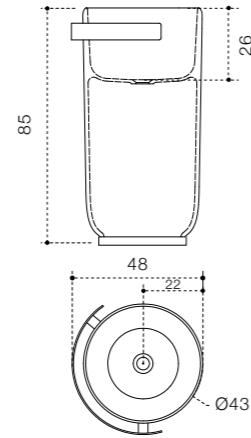
lavabo freestanding in
cristalplant biobased /
freestanding washbasin in
cristalplant biobased

bianco opaco /
matte white

larghezza / width
48 cm

altezza / height
85 cm

profondità / height
48 cm



dettaglio fissaggio maniglione in acciaio /
towel and baseboard finishes

finiture porta salviette e zoccolo / towel and baseboard finishes

metalli
metals



TI inox titanium / stainless steel titanium
RM rame spazzolato / brushed copper
OR ottone spazzolato / brushed brass
ON onice / onyx
SA inox satinato / brushed stainless steel

brevettato / patented

finiture porta salviette / towel bar finishes

metalli
metals



TI inox titanium / stainless steel titanium
RM rame spazzolato / brushed copper
OR ottone spazzolato / brushed brass
ON onice / onyx
SA inox satinato / brushed stainless steel

brevettato / patented

LANCETTA
DESIGN LUCIA CARLOMAGNO





l'espressione di un inedito equilibrio tra la grazia della forma e il rigore del disegno, la vasca lancetta, offre un'unica esperienza estetica e funzionale, enfatizzata dal calore e dalla perfezione della superficie.

expression of a new balance between grace of shape and rigor of design, lancetta bathtub offers a unique aesthetic and functional experience, emphasized by the warmth and perfection of the surface.





articolo / item
WE1

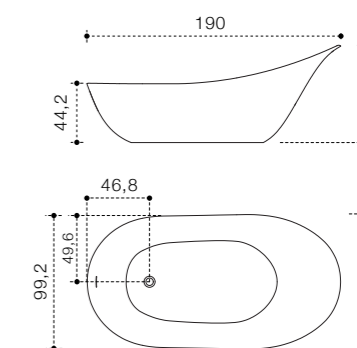
vasca freestanding /
freestanding bathtub

bianco opaco /
matte white

larghezza / width
190 cm

altezza / height
73 cm

profondità / height
101 cm



cristalplant
biobased

finiture lavabo / basin finishes



bianco opaco/
matt white

brevettato / patented

MONSIEUR

DESIGN MATTEO THUN E ANTONIO RODRIGUEZ



l'incontro fra materiali strutturati ed eleganti, per un design dalla ricercata sofisticatezza che si esprime in morbide curve e raffinati dettagli.
il progetto monsieur, firmato da matteo thun e antonio rodriguez, è frutto di uno studio incentrato sulla semplicità e la leggerezza

structured and elegant materials meet, creating a design characterised by a refined sophistication which is expressed in soft curves and precious details.
the monsieur project, designed by matteo thun and antonio rodriguez, is the result of a study focused on simplicity and lightness.





monsieur è realizzato in acciaio inox, legno massello di noce canaletto e cristalplant biobased.

monsieur is made of stainless steel, solid walnut wood and cristalplant biobased.





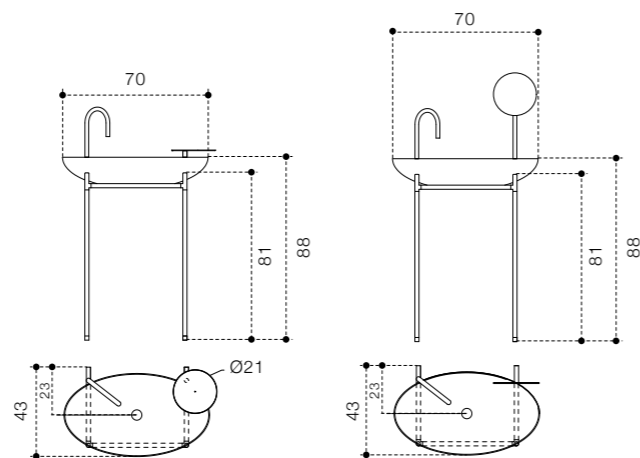
articolo / item
WMT - WMS

lavabo con rubinetto
e piattino /
basin with tap
and small shell

larghezza / width
70 cm

altezza / height
115 cm

profondità / height
43 cm



WMT
lavabo con rubinetto e piattino /
basin with tap and small shell

WMS
lavabo con rubinetto e specchio /
basin with tap and mirror



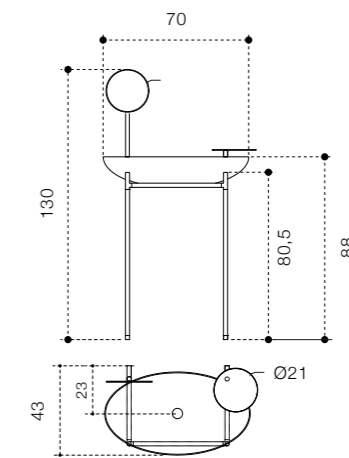
articolo / item
WMU

lavabo con specchietto
e piattino /
basin with small mirror
and small shell

larghezza / width
70 cm

altezza / height
120 cm

profondità / height
43 cm



finiture parti in acciaio / steel parts finishes

metalli
metals



TI: inox titanium / stainless steel titanium
RM: rame spazzolato / brushed copper
OR: ottone spazzolato / brushed brass
ON: onice / onyx
SA: inox satinato / brushed stainless steel

finiture parti in legno / wooden parts finishes

legni
woods

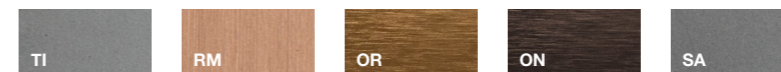


NW: noce brown / walnut brown
NB: noce naturale / natural walnut
CG: canaletto grigio / grey canaletto

brevettato / patented

finiture parti in acciaio / steel parts finishes

metalli
metals



TI: inox titanium / stainless steel titanium
RM: rame spazzolato / brushed copper
OR: ottone spazzolato / brushed brass
ON: onice / onyx
SA: inox satinato / brushed stainless steel

finiture parti in legno / wooden parts finishes

legni
woods



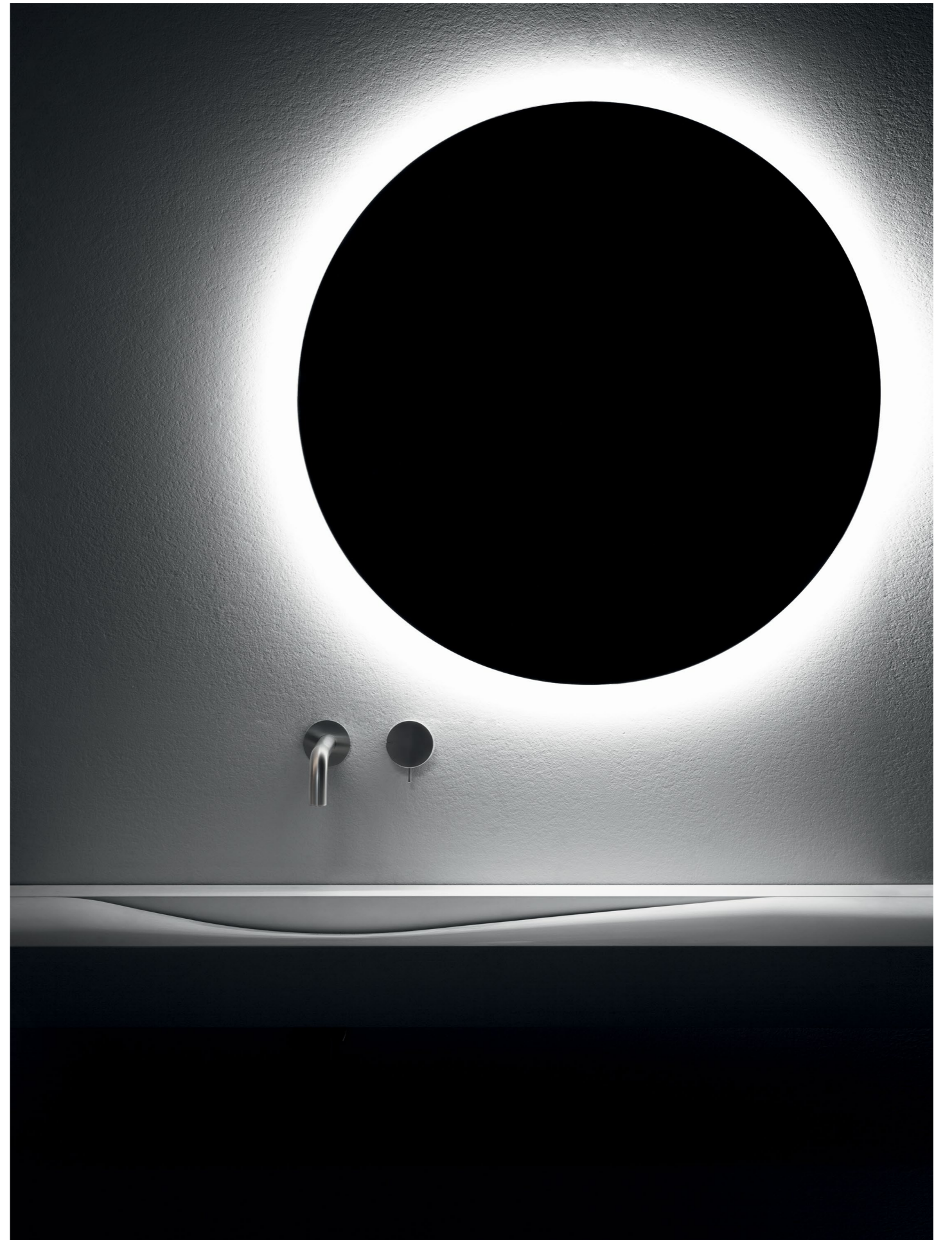
NW: noce brown / walnut brown
NB: noce naturale / natural walnut
CG: canaletto grigio / grey canaletto

brevettato / patented

WAVE
DESIGN VICTOR VASILEV







come un'onda che sta per passare. il contrasto fra le linee squadrate esterne e la sinuosità morbida del declivio centrale definisce ed esalta limite e spigoli dell'oggetto, che sincretizza in un'inedita liaison due materiali unici, la purezza studiata del solid surface e le venature del marmo di carrara.

like a wave that is about to pass. the contrast between the external squared lines and the soft sinuosity of the central declivity defines and exalts the limit and the edges of the object, which syncretizes in a new liaison two unique materials, the studied purity of the solid surface and the veins of carrara marble.







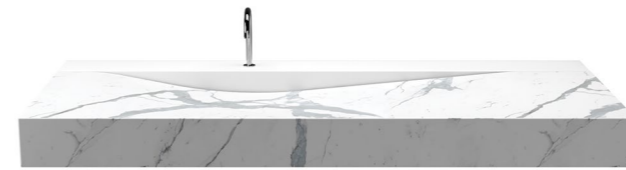
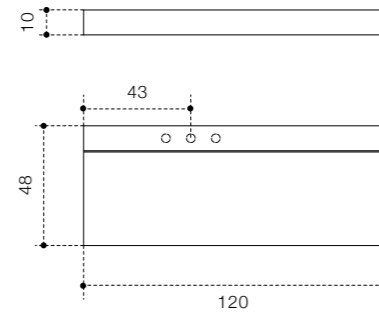
articolo / item
WP1

lavabo da parete in
cristalplant biobased /
wall mounted washbasin
in biobased cristalplant

larghezza / width
120 cm

altezza / height
10 cm

profondità / depth
48 cm



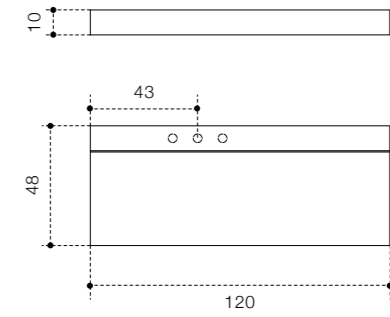
articolo / item
WP3

lavabo da parete in marmo /
marble wall mounted
washbasin

larghezza / width
120 cm

altezza / height
10 cm

profondità / depth
48 cm



finiture lavabo / basin finishes

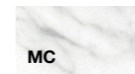
cristalplant
biobased



bianco opaco/
matt white

finiture lavabo / basin finishes

marmi 1
marbles 1



carrara

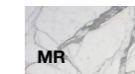


pietra grey



nero marquina

marmi 2
marbles 2



statuario



calacatta gold

brevettato / patented

brevettato / patented

credits

graphic design
chiara boselli studio

photo
alberto strada

thanks to:

baxter
carpet edition
cleaf piombo
decor walther
davide groppi
fantini rubinetterie
haute material
kose milano
matter ny
mdf
menu a/s
normann copenhagen
onluce bologna
porada
viabizzuno

Falper srl
Via Veneto 7-9
40064 Ozzano Emilia - Bologna (Italy)
Tel +39 051 799319
Fax +39 051 796495
info@falper.it
www.falper.it

