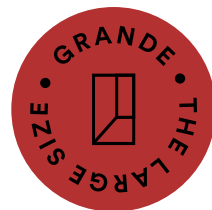


MARAZZI



# THE TOP

THE LARGE SIZE

## Cersaie Special

Le nuove lastre Marazzi  
per worktop, backsplash, tavoli  
e soluzioni speciali. Esclusività e prestazioni  
eccellenti per l'interior design • The new Marazzi  
slabs for worktops, backsplashes,  
tables and special solutions.

Luxury and outstanding performances  
for interior design

160x320 • 162x324



THE TOP

**MARAZZI**



# The Top

**Avanguardia tecnologica, raffinatezza estetica e innata versatilità: dalla collezione Marazzi Grande nasce The Top, una selezione di lastre Marazzi di grandi dimensioni in gres porcellanato appositamente pensate per la realizzazione di top, backsplash, tavoli, ante e infinite opzioni di arredo tailor made per spazi residenziali e commerciali.**

**The Top garantisce prestazioni tecniche eccellenti, frutto di ricerche esclusive sulla materia e delle più avanzate tecnologie applicate.**

**EN** Technological innovation, aesthetic sophistication and innate versatility: the Marazzi Grande line now includes The Top, a selection of large-size porcelain stoneware Marazzi tiles specially designed for the creation of tops, backsplashes, tables, doors and infinite tailor-made furnishing options for residential and commercial locations. The Top guarantees outstanding technical performance, the result of exclusive research on the material and the most advanced applied technologies.

**FR** Avant-garde technologique, raffinement esthétique et souplesse d'emploi innée : la collection Marazzi Grande nous révèle The Top, une sélection de dalles Marazzi de grande taille en grès cérame, faites tout spécialement pour plans de travail/toilette, dosserets, tables, portes et une multitude d'objets d'ameublement « personnalisés » pour le résidentiel et pour le commercial. The Top garantit une performance technique d'excellence, basée sur des technologies de dernière génération

et sur des recherches exclusives sur la matière.

**DE** Modernste Technologie, raffinierte Optik und inhärente Vielseitigkeit: The Top, entstanden aus der Kollektion Marazzi Grande, besteht aus einer Auswahl großformatiger Feinsteinzeugplatten von Marazzi zur Gestaltung von Küchenarbeitsplatten, Fliesenspiegeln, Tischen, Fronten und einer unendlichen Vielzahl an maßgeschneiderten Einrichtungs-elementen für private und gewerbliche Bereiche. The Top bietet ausgezeichnete Leistungsmerkmale, die besonderen Materialforschungen und modernsten Technologien zu verdanken sind.

**ES** Vanguardia tecnológica, refinamiento estético e innata versatilidad: a partir de la colección Marazzi Grande nace The Top, una selección de placas de Marazzi de grandes dimensiones de gres porcelánico concebidas específicamente para la realización de encimeras, salpicaderos, mesas, hojas e infinitas opciones de decoración

hecha a medida para espacios residenciales y comerciales. The Top garantiza unas prestaciones técnicas excelentes, fruto de investigaciones exclusivas sobre la materia y de las más avanzadas tecnologías aplicadas.

**RU** Технологический авангард, эстетическая изысканность и врожденная универсальность: на основе линейки Marazzi Grande создается The Top - подборка плит Marazzi больших размеров из керамогранита, специально предназначенная для изготовления столешниц, фартуков в оформлении кухонь, столов, створок и бесчисленных дополнений интерьера в индивидуальном исполнении для жилых и коммерческих пространств. The Top предлагает великолепные технические характеристики - результат эксклюзивных исследований материалов и самых передовых технологий применения.



M710 Grande Stone Look Pietra di Vals Grey Nat. 162x324  
M7AV Vero Castagno Rett. 22,5x180



## Marble Look

### 18 ispirazioni lux e satin

Marble Look 18 glossy and satin inspirations • Marble Look 18 inspirations brillantes et satinées • Marble Look 18 Inspirationen, glänzend und seidenmatt • Marble Look dieciséte inspiraciones brillantes y satinadas • Marble Look 18 полированных и сатиновых вариантов

## Concrete Look

### 4 colori, matt

Concrete Look 4 colours, matt • Concrete Look 4 couleurs, mates • Concrete Look 4 Farben, matt • Concrete Look cuatro colores, mates • Concrete Look 4 цвета, матовая отделка

## Metal Look

### 2 colori, matt

Metal Look 2 colours, matt • Metal Look 2 couleurs, mates • Metal Look 2 Farben, matt • Metal Look dos colores, mates • Metal Look 2 цвета, матовая отделка

## Stone Look

### 7 colori, matt

Stone Look 7 colours, matt • Stone Look 7 couleurs, mates • Stone Look 7 Farben, matt • Stone Look siete colores, mates • Stone Look 7 цвета, матовая отделка

## Solid Color

### 2 colori, lux e satin

Solid Color 2 colours, glossy and satin • Solid Color 2 couleurs, brillantes et satinées • Solid Color 2 Farben, glänzend und seidenmatt • Solid Color dos colores, brillantes y satinados • Solid Color 2 цвета, полированная и сатиновая отделка



## 160x320 (6 mm)

## 162x324 (12 mm)

### Duttilità & versatilità, leggerezza & solidità

160x320 (6 mm), 162x324 (12 mm). Easy cutting, versatility, lightness and solidity • 160x320 (6 mm), 162x324 (12 mm). Ductilité et polyvalence, légèreté et solidité • 160x320 (6 mm), 162x324 (12 mm). Verarbeitungsflexibilität und Vielseitigkeit, Leichtigkeit und Robustheit • 160 x 320 (6 mm), 162 x 324 (12 mm). Ductilidad y versatilidad, ligereza y solidez • 160x320 (6 mm), 162x324 (12 mm). Податливость и практичность, легкость и прочность

## Everything

### Top bagni & cucine, banchi, backsplash, tavoli, ante, facciate, arredi, ecc.

Everything. Bathroom and kitchen tops, worktops, backsplashes, tables, doors, furniture, etc. • Everything. Plans de toilette/travail, bancs, dossierets, tables, portes, mobilier, etc. • Everything. Waschtisch- und Küchenarbeitsplatten, Bänke, Fliesenspiegel, Tische, Fronten, Einrichtungselemente, usw. • Everything. Encimeras de baños y cocinas, mostradores, salpicaderos, mesas, hojas, decoraciones, etc. • Все. Столешницы для ванн и кухонь, столы-стойки, кухонные фартуки, столы, створки, мебель и т.д.

## Everywhere

### Home, office, commercial, bars & restaurants, hospitality, public spaces, ecc.

Everywhere. Home, office, commercial, bars & restaurants, hospitality, public spaces, ecc. • Everywhere. Résidentiel, bureaux, commercial, bars et restaurants, hôtels, espaces publics, etc. • Everywhere. Privat, Büro, Gewerbe, Bars und Restaurants, Hotel- und Gaststättenwesen, öffentliche Bereiche, usw. • Everywhere. Viviendas, oficinas, locales comerciales, bares y restaurantes, hostelería, espacios públicos, etc. • Везде. Жилье, офисы, коммерческие площади, бары и рестораны, гостиничные структуры, общественные пространства и т.д.

## Tailor Made

### infinite possibilità di personalizzazione

Tailor Made infinite customisation potential • Sur mesure une infinité de possibilités de personnalisation • Maßgeschneidert Unzählige Individualisierungsmöglichkeiten • Hecho a medida infinitas posibilidades de personalización • На заказ бесконечные возможности индивидуализации



**Resiste agli urti e ai graffi**

Resistant to shocks and scratches • Résiste aux chocs et aux rayures • Schlag- und Kratzfest  
 • Resistente a los impactos y a los arañazos  
 • Стойкая к ударам и к царапинам

**Resiste al gelo e al calore**

Resistant to frost and heat • Résiste au gel et à la chaleur • Frost- und Wärmebeständig  
 • Resistente a las heladas y al calor • Стойкая к морозу и к теплу

**Resiste a macchie, acidi e muffe**

Resistant to stains, acids and moulds • Résiste aux taches, aux acides et aux moisissures • Flecken-Säure- und Schimmelbeständig • Resistente a las manchas, a los ácidos y al moho • Стойкая к пятнам, кислотам и плесени

**Ignifugo**

Flame retardant • Ignifuge • Feuerhemmend  
 • Ignifugo • Огнестойкая

**100% igiene**

100% hygienic • 100 % hygiène  
 • 100 % hygienisch • 100% higiénico  
 • 100% гигиеничная

**Facile da pulire**

Easy to clean • Facile à nettoyer • Pflegeleicht  
 • Fácil de limpiar • Простая в очистке



**Non assorbe liquidi**

Does not absorb liquids • N'absorbe pas les liquides • Absorptionsfrei • No absorbe líquidos  
 • Не впитывающая

**Non rilascia sostanze nocive**

Does not release harmful substances • Ne libère aucune substance toxique • Setzt keine gesundheitsschädlichen Stoffe frei • No emana substancias nocivas • Не выделяет вредные вещества

**Non cambia colore**

Does not change colour • Ne change pas de couleur • Farbecht • No cambia de color  
 • Не изменяет цвет

**Non si deforma**

Does not warp • Ne se déforme pas • Verformt sich nicht • No se deforma • Не деформируется

**Facile da trasformare**

Easy to transform • Facile à transformer • Leicht umzuwandeln • Fácil de transformar • Простая в обработке

**Materie prime selezionate**

Selected raw materials • Matières premières sélectionnées • Ausgewählte Rohstoffe  
 • Materias primas selectas • Отобранное сырье

**Eco friendly**

Eco-friendly • Écologique • Umweltfreundlich  
 • Ecológico • Экологичная





M68S Grande Stone Look Gris du Gent Satin 162x324



**M6YS** Grande Stone Look Granito Black Satin Rett. 160x320  
**M68Z** Grande Stone Look Granito Black Satin 162x324  
**M70M** Grande Stone Look Pietra di Vals Grey Nat. Rett. 160x320



**M68X** Grande Stone Look Moon Satin 162x324  
**M11A** Grande Metal Look Iron Light Rett. 160x320





M7GK Grande Marble Look Grigio Carnico Satin 162x324



THE TOP

CERSAIE SPECIAL



M10H Grande Marble Look Altissimo Lux 162x324  
M6RR Lume Blue Lux 6x24





**M68X** Grande Stone Look Moon Satin 162x324  
**M7AY** Vero Natural Rett. 20x120





**M7G5** Grande Marble Look Calacatta Vena Vecchia Satin Rett. 160x320  
**M6EQ** Mystone Moon Grey Rett. 120x120

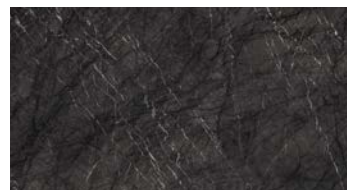


Marble Look

Gres Effetto Marmo • Marble-Look Stoneware • Grès Effet Marbre • Feinsteinzeug in Marmoroptik  
 • Gres Efecto Mármol • Керамогранит Под Мрамор



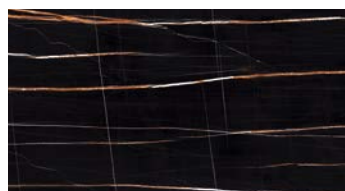
**Marble Look Verde Aver**  
**M7GD** 160x320 Lux Rett.  
**M7S7** 160x320 Lux Stuoiato Rett.



**Marble Look Grigio Carnico**  
**M7GK** 162x324 Satin  
**M7SE** 162x324 Satin Stuoiato  
**M7GE** 160x320 Lux Rett.  
**M7S8** 160x320 Lux Stuoiato Rett.  
**M7G4** 160x320 Satin Rett.  
**M7RS** 160x320 Satin Stuoiato Rett.



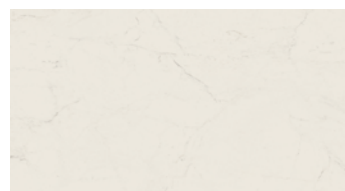
**Marble Look Calacatta Vena Vecchia**  
**M7GF** 160x320 Lux Rett.  
**M7S9** 160x320 Lux Stuoiato Rett.  
**M7G5** 160x320 Satin Rett.  
**M7S0** 160x320 Satin Stuoiato Rett.



**Marble Look Sahara Noir**  
**M8ZJ** 160x320 Lux Rett.  
**M8ZL** 160x320 Lux Stuoiato Rett.



**Marble Look Terrazzo Grey**  
**M5HQ** 160x320 Lux Rett.  
**M5KS** 160x320 Lux Stuoiato Rett.  
**M7GM** 160x320 Nat. Rett.  
**M7S5** 160x320 Nat. Stuoiato Rett.



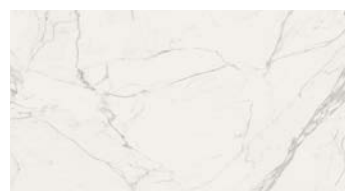
**Marble Look Altissimo**  
**M10H** 162x324 Lux  
**M33P** 162x324 Lux Stuoiato  
**M0ZS** 162x324 Satin  
**M34M** 162x324 Satin Stuoiato  
**M106** 160x320 Lux Rett.  
**M37E** 160x320 Lux Stuoiato Rett.  
**M0ZZ** 160x320 Satin Rett.  
**M36R** 160x320 Satin Stuoiato Rett.



**Marble Look Raffaello**  
**M10Q** 162x324 Lux  
**M33T** 162x324 Lux Stuoiato  
**M0ZU** 162x324 Satin  
**M34U** 162x324 Satin Stuoiato  
**M108** 160x320 Lux Rett.  
**M37G** 160x320 Lux Stuoiato Rett.  
**M101** 160x320 Satin Rett.  
**M36T** 160x320 Satin Stuoiato Rett.



**Marble Look Golden White**  
**M10G** 162x324 Lux  
**M33K** 162x324 Lux Stuoiato  
**M0ZR** 162x324 Satin  
**M34J** 162x324 Satin Stuoiato  
**M105** 160x320 Lux Rett.  
**M37D** 160x320 Lux Stuoiato Rett.  
**M0ZY** 160x320 Satin Rett.  
**M36K** 160x320 Satin Stuoiato Rett.



**Marble Look Statuario**  
**M10L** 162x324 Lux  
**M33U** 162x324 Lux Stuoiato  
**M0ZV** 162x324 Satin  
**M34V** 162x324 Satin Stuoiato  
**M109** 160x320 Lux Rett.  
**M37H** 160x320 Lux Stuoiato Rett.  
**M102** 160x320 Satin Rett.  
**M36U** 160x320 Satin Stuoiato Rett.  
 Book Match: **M10E** A+**M10F** B 160x320 Lux Rett.  
 Book Match: **M37M** A+**M37N** B 160x320 Lux Stuoiato Rett.

Marble Look

Gres Effetto Marmo • Marble-Look Stoneware • Grès Effet Marbre • Feinsteinzeug in Marmoroptik  
 • Gres Efecto Mármol • Керамогранит Под Мрамор



**Marble Look Lasa**  
**M107** 160x320 Lux Rett.  
**M37F** 160x320 Lux Stuoiato Rett.  
**M100** 160x320 Satin Rett.  
**M36S** 160x320 Satin Stuoiato Rett.



**Marble Look Capraia**  
 Book Match: **M0ZH** A+**M5HV** B 162x324 Lux  
 Book Match: **M1KM** A+**M5S7** B 162x324 Lux Stuoiato  
 Book Match: **M0ZP** A+**M0ZQ** B 160x320 Lux Rett.  
 Book Match: **M37S** A+**M37T** B 160x320 Lux Stuoiato Rett.



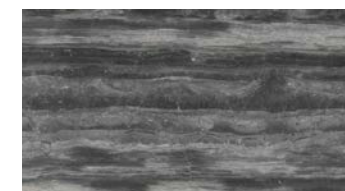
**Marble Look Frappuccino**  
**M10D** 160x320 Lux Rett.  
**M37K** 160x320 Lux Stuoiato Rett.



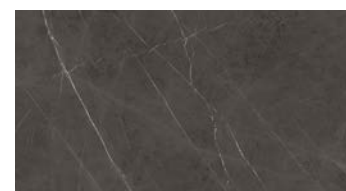
**Marble Look Calacatta Extra**  
**M0ZK** 160x320 Lux Rett.  
**M37P** 160x320 Lux Stuoiato Rett.  
**M0Z4** 160x320 Satin Rett.  
**M378** 160x320 Satin Stuoiato Rett.  
 Book Match: **M0ZD** A+**M5HU** B 162x324 Lux  
 Book Match: **M33X** A+**M5S6** B 162x324 Lux Stuoiato  
 Book Match: **M0Z8** A+**M5HS** B 162x324 Satin  
 Book Match: **M34Z** A+**M5S9** B 162x324 Satin Stuoiato



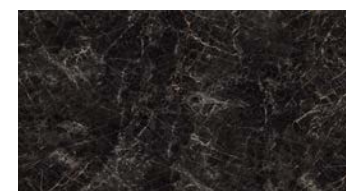
**Marble Look Pulpis**  
**M0ZF** 162x324 Lux  
**M343** 162x324 Lux Stuoiato  
**M0ZA** 162x324 Satin  
**M352** 162x324 Satin Stuoiato  
**M0ZM** 160x320 Lux Rett.  
**M37R** 160x320 Lux Stuoiato Rett.



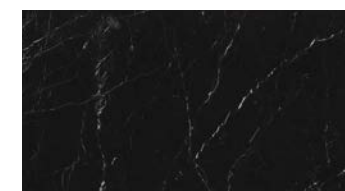
**Marble Look Brera Grey**  
**M10M** 162x324 Lux  
**M33V** 162x324 Lux Stuoiato  
**M0ZW** 162x324 Satin  
**M34W** 162x324 Satin Stuoiato  
**M10A** 160x320 Lux Rett.  
**M37J** 160x320 Lux Stuoiato Rett.  
**M103** 160x320 Satin Rett.  
**M376** 160x320 Satin Stuoiato Rett.



**Marble Look Imperiale**  
**M0ZG** 162x324 Lux  
**M345** 162x324 Lux Stuoiato  
**M0ZC** 162x324 Satin  
**M353** 162x324 Satin Stuoiato  
**M0ZN** 160x320 Lux Rett.  
**M37U** 160x320 Lux Stuoiato Rett.



**Marble Look Saint Laurent**  
**M10N** 162x324 Lux  
**M33W** 162x324 Lux Stuoiato  
**M0ZX** 162x324 Satin  
**M34X** 162x324 Satin Stuoiato  
**M10C** 160x320 Lux Rett.  
**M37L** 160x320 Lux Stuoiato Rett.  
**M104** 160x320 Satin Rett.  
**M377** 160x320 Satin Stuoiato Rett.



**Marble Look Elegant Black**  
**M0ZE** 162x324 Lux  
**M342** 162x324 Lux Stuoiato  
**M0Z9** 162x324 Satin  
**M350** 162x324 Satin Stuoiato  
**M0ZL** 160x320 Lux Rett.  
**M37Q** 160x320 Lux Stuoiato Rett.  
**M0Z5** 160x320 Satin Rett.  
**M379** 160x320 Satin Stuoiato Rett.

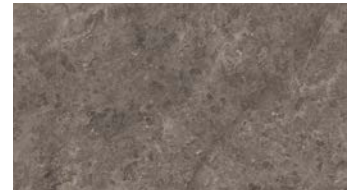


Stone Look

Gres Effetto Pietra • Stone Look Stoneware • Grès Effet Pierre • Feinsteinzeug in Natursteinoptik  
 • Gres Efecto Piedra • Керамогранит под камень



**Stone Look Moon**  
**M68X** 162x324 Satin  
**M7RJ** 162x324 Satin Stuoiato



**Stone Look Gris du Gent**  
**M68S** 162x324 Satin  
**M7RK** 162x324 Satin Stuoiato  
**M6YJ** 160x320 Satin Rett.  
**M7QS** 160x320 Satin Stuoiato Rett.



**Stone Look Granito Black**  
**M68Z** 162x324 Satin  
**M7RL** 162x324 Satin Stuoiato  
**M6YS** 160x320 Satin Rett.  
**M7RE** 160x320 Satin Stuoiato Rett.



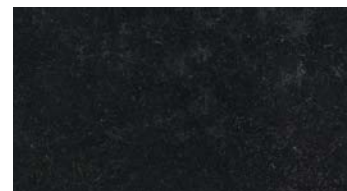
**Stone Look Pietra di Vals Grey**  
**M710** 162x324 Nat.  
**M7RN** 162x324 Nat. Stuoiato  
**M70M** 160x320 Nat. Rett.  
**M7RG** 160x320 Nat. Stuoiato Rett.



**Stone Look Ceppo di Gré Grey**  
**M10U** 162x324 Nat.  
**M38U** 162x324 Nat. Stuoiato  
**M10V** 160x320 Nat. Rett.  
**M38S** 160x320 Nat. Stuoiato Rett.



**Stone Look Basaltina**  
**M2YP** 162x324 Nat.  
**M38V** 162x324 Nat. Stuoiato



**Stone Look Bluestone**  
**M2YQ** 162x324 Nat.  
**M38W** 162x324 Nat. Stuoiato

Concrete Look

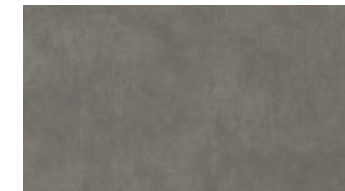
Gres Effetto Cotto Cemento • Concrete Terracotta Look Stoneware • Grès Effet Ciment Cotto  
 • Beton-Cotto-Optik Feinsteinzeug • Gres Efecto Cotto Cemento  
 • Керамогранит С Эффектом Неглазурованной Керамики/Цементa



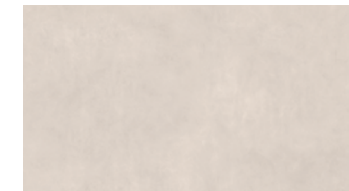
**Concrete Look Crete**  
**M0TU** 162x324  
**M383** 162x234 Stuoiato  
**M0TX** 160x320 Rett.  
**M37W** 160x320 Stuoiato Rett.



**Concrete Look Smoke**  
**M0TL** 162x324  
**M384** 162x324 Stuoiato  
**M0TW** 160x320 Rett.  
**M37X** 160x320 Stuoiato Rett.



**Concrete Look Graphite**  
**M0TK** 162x324  
**M385** 162x324 Stuoiato  
**M0TV** 160x320 Rett.  
**M37Y** 160x320 Stuoiato Rett.



**Concrete Look White**  
**M0Z2** 162x324  
**M386** 162x324 Stuoiato  
**M0Z3** 160x320 Rett.  
**M37Z** 160x320 Stuoiato Rett.

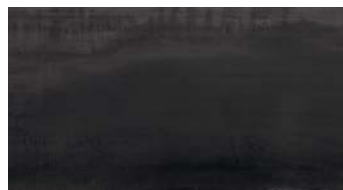


### Metal Look

Gres Effetto Metallo • Metal-look Stoneware • Grès Effet Métal  
 • Feinsteinzeug Metaloptik • Gres Efecto Metal • Керамогранит с Эффектом Металла



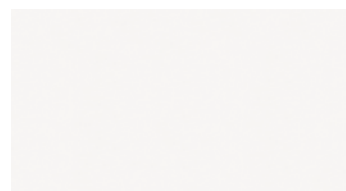
**Metal Look Iron Light**  
**M116** 162x324  
**M38C** 162x324 Stuoiato  
**M11A** 160x320 Rett.  
**M388** 160x320 Stuoiato Rett.



**Metal Look Iron Dark**  
**M117** 162x324  
**M38D** 162x324 Stuoiato  
**M11C** 160x320 Rett.  
**M389** 160x320 Stuoiato Rett.

### Solid Color

Gres Porcellanato Tinta Unita • Solid Colour Porcelain Stoneware • Grès Cérame Teinte Unie  
 • Feinsteinzeug Unifarbe • Gres Porcelánico Monocolor • Однотонный Керамогранит



**Solid Color White**  
**M15Q** 162x324 Lux  
**M38Q** 162x324 Lux Stuoiato  
**M11T** 162x324 Satin  
**M38M** 162x324 Satin Stuoiato  
**M11Z** 160x320 Lux Rett.  
**M38K** 160x320 Lux Stuoiato Rett.  
**M1JW** 160x320 Satin Rett.  
**M38G** 160x320 Satin Stuoiato Rett.



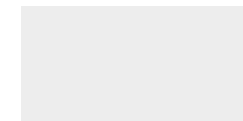
**Solid Color Black**  
**M11U** 162x324 Satin  
**M38N** 162x324 Satin Stuoiato

### Techs & Specs

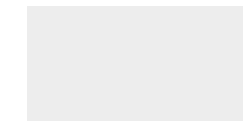
Caratteristiche Tecniche • Technical Features • Caracteristiques Techniques • Technische Eigenschaften  
 • Características Técnicas • Технические Характеристики

### Formati • Sizes

Gres Fine Porcellanato Colorato in Massa • Colorbody Fine Porcelain Stoneware • Grès Cérame Fin Coloré dans la Masse  
 • Durchgefärbtes Feinsteinzeug • Gres Porcelánico Fino Coloreado en Masa • Гомогенный мелкозернистый Керамогранит



160x320x6



162x324x12



**Facilità di pulizia e manutenzione** • Easy cleaning and care • Facilité de nettoyage et d'entretien  
 • Reinigungsfreundlich und pflegeleicht • Facilidad de limpieza y mantenimiento  
 • Простота чистки и ухода



**Resistenza agli sbalzi termici**  
 • Thermal shock resistance  
 • Résistance aux chocs thermiques • Temperaturwechselbeständig • Resistencia al choque térmico • Стойкость к тепловым перепадам



**Resiste al calore** • Heat-resistant • Résiste à la chaleur  
 • Wärmebeständig • Resistente al calor • Теплостойкость



**Resistenza alle macchie**  
 • Resistance to stains  
 • Résistance aux taches  
 • Fleckbeständig • Resistencia a las manchas • Стойкость к образованию пятен



**Resistenza dei colori alla luce**  
 • Light-fast colours • Résistance des couleurs à la lumière • Farb- und lichtecht • Resistencia de los colores a la luz  
 • Светостойкость цветов



**Resistenza ai prodotti chimici per uso domestico** • Resistance to household chemicals • Résistance aux produits chimiques domestiques • Beständig gegen Haushaltschemikalien  
 • Resistencia a los productos químicos de uso doméstico  
 • Стойкость к бытовым химическим продуктам



**Resistenza ai graffi** • Scratch resistance • Résistance aux rayures • Kratzfestigkeit  
 • Resistencia a los arañazos  
 • Устойчивость к царапинам



**Non assorbe liquidi** • Does not absorb liquids • N'absorbe pas les liquides • Absorptionsfrei  
 • No absorbe líquidos • Не впитывающая



**Resistenza all'urto** • Impact resistance • Résistance aux chocs • Schlagfestigkeit  
 • Resistencia al impacto  
 • Ударопрочность



